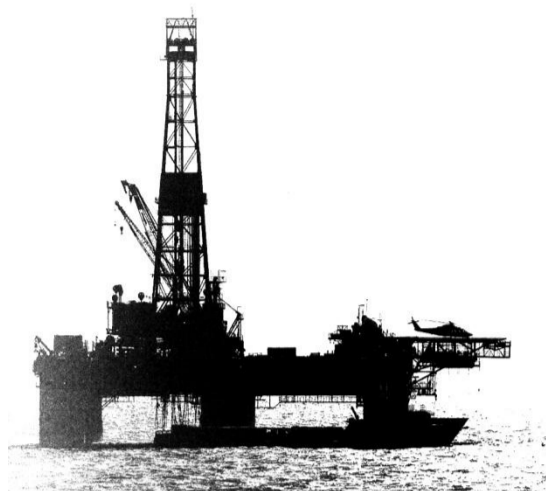


Welding Consumables for Oil & Gas Industries

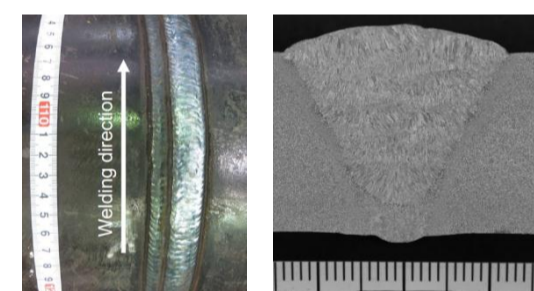
Flux Cored Wires for Offshore Structures



Y.S. level	IV@temp. (Min. 20 ft-lbs)		
	-40°F (-40°C)	-58°F (-50°C)	-76°F (-60°C)
58 ksi	FAMILIARC DW-A55ESR (A5.20 E71T-12M-J)	FAMILIARC DW-A55EH (A5.20 E71T-12M-J H8)	-
68 ksi	TRUSTARC DW-A55LSR (A5.29 E81T1-Ni1M)	TRUSTARC DW-A81Ni1 (A5.29 E81T1-Ni1M-J)	
78 ksi	TRUSTARC DW-A62L (A5.29 E91T1-GM)	TRUSTARC DW-A65L (A5.29 E91T1-K2M-J)	
88 ksi	TRUSTARC DW-A70L (A5.29 E101T1-GM)		-
98 ksi	TRUSTARC DW-A80L (A5.29 E111T1-GM)		-

Flux Cored Wires for Girth Welding

API 5L Pipe Grade	IV@temp. (Min. 20 ft-lbs)		
	-4°F (-20°C)	-40°F (-40°C)	-76°F (-60°C)
X42 – X56	FAMILIARC DW-50 (A5.20 E71T-1C/M -9C/M H8)	FAMILIARC DW-A55ESR (A5.20 E71T-12M-J)	TRUSTARC DW-A55LSR (A5.29 E81T1-Ni1M)
X60	FAMILIARC DW-A55ESR (A5.20 E71T-12M-J)		TRUSTARC DW-A55LSR (A5.29 E81T1-Ni1M)
X65	FAMILIARC DW-A55ESR (A5.20 E71T-12M-J)		TRUSTARC DW-A81Ni1 (A5.29 E81T1-Ni1M-J) TRUSTARC DW-A55LSR (A5.29 E81T1-Ni1M)
X70	TRUSTARC DW-A70L (A5.29 E101T1-GM)		TRUSTARC DW-A62L (A5.29 E91T1-GM)
X80	TRUSTARC DW-A70L (A5.29 E101T1-GM)		-
X100	TRUSTARC DW-A80L (A5.29 E111T1-GM)		-



TRUSTARC DW-A70L
API 5L X65-PSL1 (1/2")
200A – 24V (5G)

Welding Consumables for General Construction

Product name	Type of Product	Chemical composition (%)						0.2%OS (ksi)	TS (ksi)	EI (%)	IV (ft-lbf)
		C	Si	Mn	P	S	Ni				
FRONTIARC-711 (A5.20 E71T-1C/M, -12C/M H8)	Flux cored wire	0.04	0.56	1.32	0.012	0.009	-	75.8	85.6	31	54 (-20°F)
FAMILIARC DW-50 (A5.20 E71T-1C/M, -9C/M H8)	Flux cored wire	0.05	0.71	1.52	0.011	0.009	-	81.3	89.1	28	43 (-20°F)
FAMILIARC DW-A55ESR (A5.20 E71T-12MJ)	Flux cored wire	0.05	0.47	1.36	0.011	0.007	0.43	75.9	85.4	29	100 (-50°F)
FAMILIARC DW-A55EH (A5.20 E71T-12MJ H8)	Flux cored wire	0.05	0.63	1.17	0.010	0.007	0.38	80.9	88.2	30	98 (-40°F)
FAMILIARC MX-A70C6LF (A5.18 E70C-6M H4)	Metal cored wire	0.03	0.85	1.70	0.008	0.010	-	65.0	80.0	31	64 (-20°F)
FAMILIARC MG-51T (A5.18 ER70S-6)	Solid wire	0.08	0.85	1.43	0.015	0.009	-	61.0	77.0	31	66 (-20°F)