

Welding Consumables for Shipbuilding

Flux Cored Wires for Shipbuilding

Welding Process	Product Name			
FCAW for all position	FRONTIARC-711 (A5.20 E71T-1C/M, -12C/M H8)	DW-50 (A5.20 E71T-1C/1M, -9C/M H8)		
FCAW for horizontal fillet	MX-200 (A5.20 E70T-1C)	MX-200E (A5.20 E70T-9C)	MX-200H (A5.20 E70T-1C)	MX-A200 (A5.20 E70T-9M)
EGW for Vertical upward	DW-S43G (A5.20 EG70T-2)	DW-S1LG (-)		



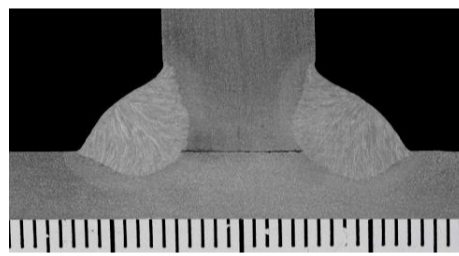
Flux Cored Wires for All Position Welding



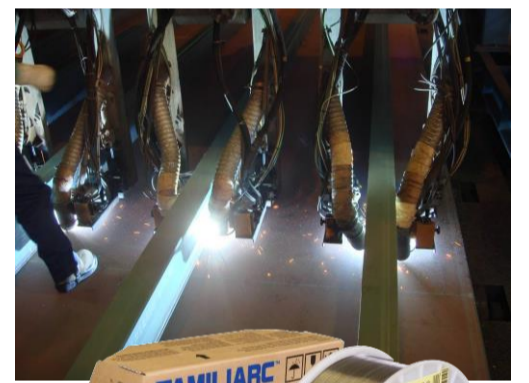
Product Name	Shipping Approvals			0.2%OS (ksi)	TS (ksi)	EI (%)	IV@-20°F (ft-lbf)
	ABS	LR	DNV				
FRONTIARC-711	3YSA(H10)	3YS H10	-	75.9	85.6	31	54
DW-50	3YSA(H5)	3YS H5	III YSM(H5)	81.2	89.2	28	43

Flux Cored Wires for Horizontal Fillet Welding

Product name	Shipping Approvals		
	ABS	LR	DNV
MX-200	2YSA(H5) 2Y400SA(H5)	2YS H5	II YSM(H5)
MX-200E	4Y400SA	4Y40S	IV Y40MS(H5)
MX-200H	3YA(H5) 3YSA(H5)	3YS H5	III YS
MX-A200	3YSA(H5)		III YMS(H5)



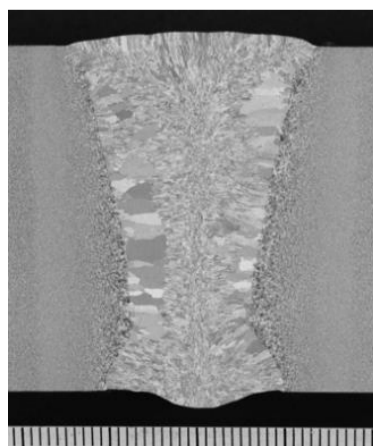
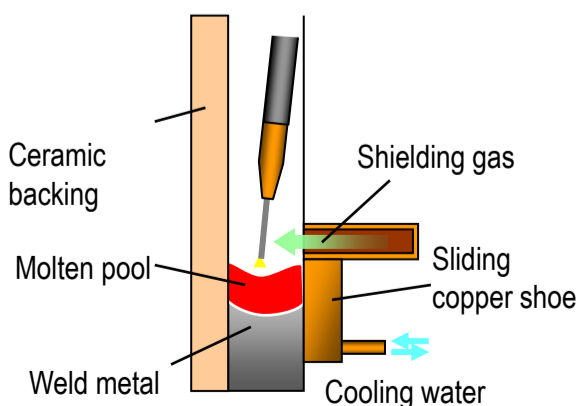
FAMILIARC MX-200E 0.045" 280A-32V 20 in./min



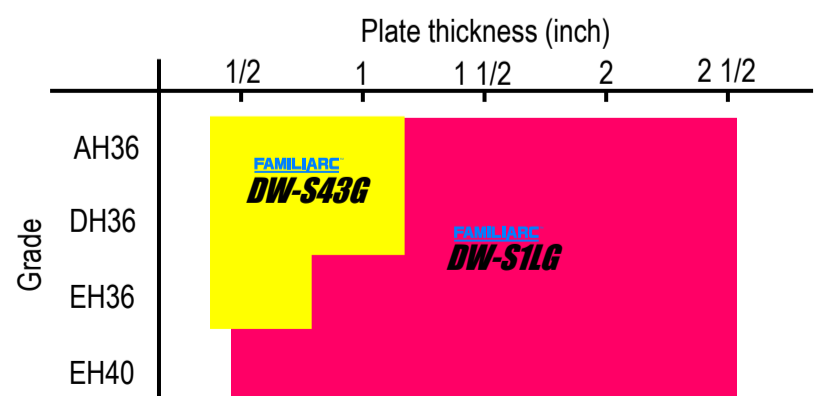
Electrode Gas Arc Welding - SEGARCTM Process -



Product Name	Shipping Approvals			0.2%OS (ksi)	TS (ksi)	EI (%)	IV (ft-lbf)
	ABS	LR	DNV				
DW-S43G	3YA 2Y400A	2, 2Y 3, 3Y	III Y	68.2	87.0	25	46 (0°F)
DW-S1LG	3YA 3Y400A	5Y40	V Y	72.5	89.2	25	74 (-76°F)



FAMILIARC DW-S1LG 1/16" 400A-41V 2.0 in./min
Base metal: EH36 Thickness: 1 1/2"



Applicable range for plate thickness